

Allergenfri luft i andningszonen nattetid

Christophe Pedroletti MD, PhD
Verksamhetschef
Pediatrik
Akademiska Barnsjukhuset

Bindningar och jäv

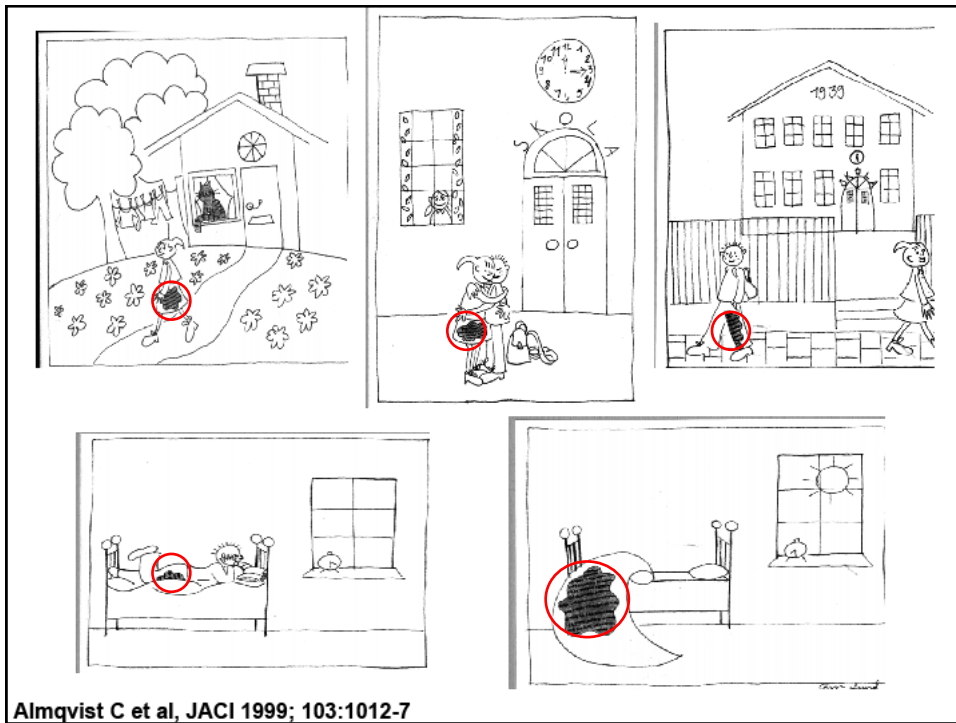
Publikation av de första två studierna på
tekniken.

Ekonomiskt stöd för studierna från Airsonett
Inga ekonomiska bindningar till den
kommersialiserade produkten (aktier, patent,
royalties)

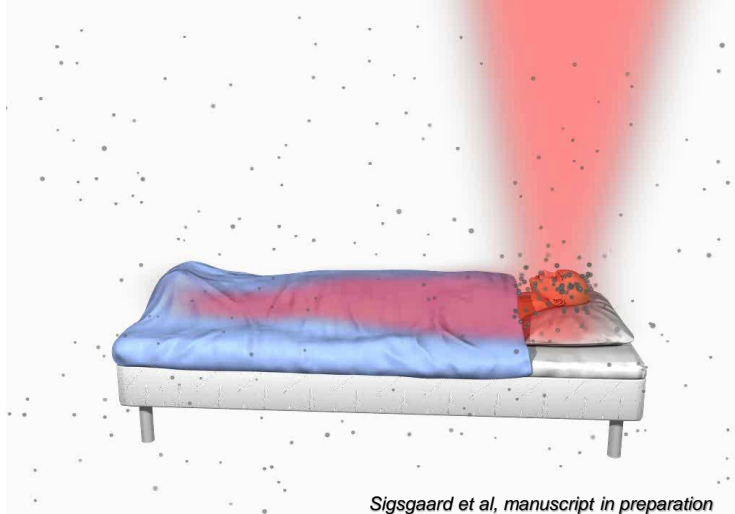
Airsonett Advisory Board

Föreläsningens arvoden (Airsonett, AstraZeneca,
Meda, GSK mfl).



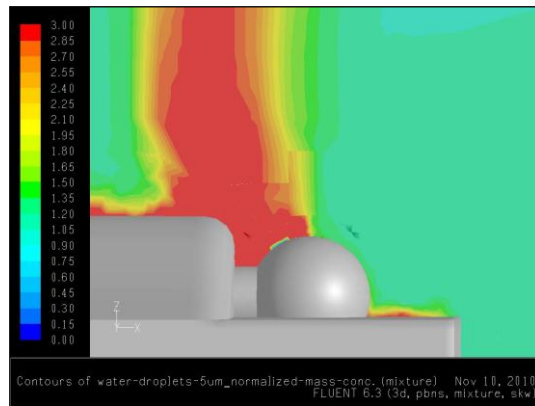


Konvektionströmmar och kroppsrörelser koncentrerar allergenen i andningszonen



Partikelsimulering 5 μm

CFD simulation of particle concentrations around the breathing zone.

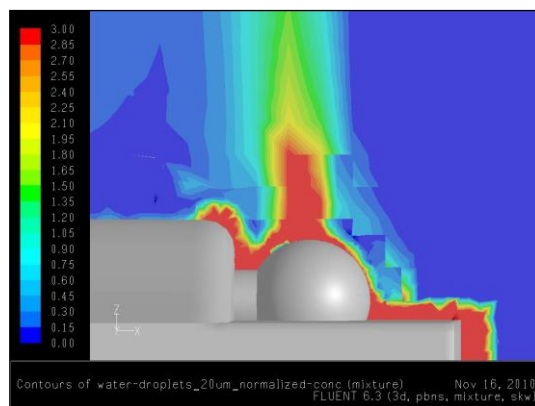


Sigsgaard et al, manuscript in preparation



Partikelsimulering 20 μm

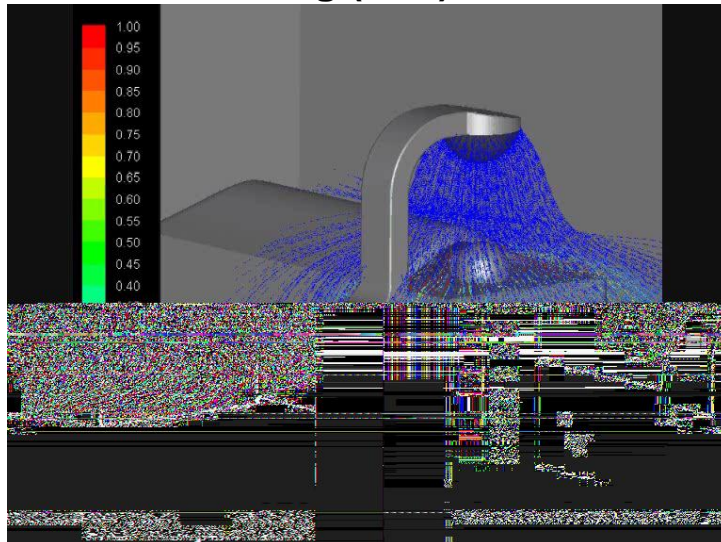
CFD simulation of particle concentrations around the breathing zone.



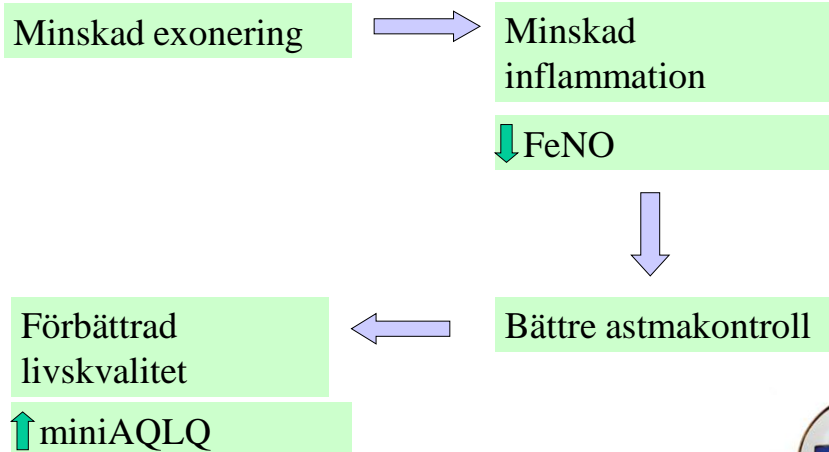
Sigsgaard et al, manuscript in preparation



Flödessimulering (TLA)



Den allergenfria hypotesen



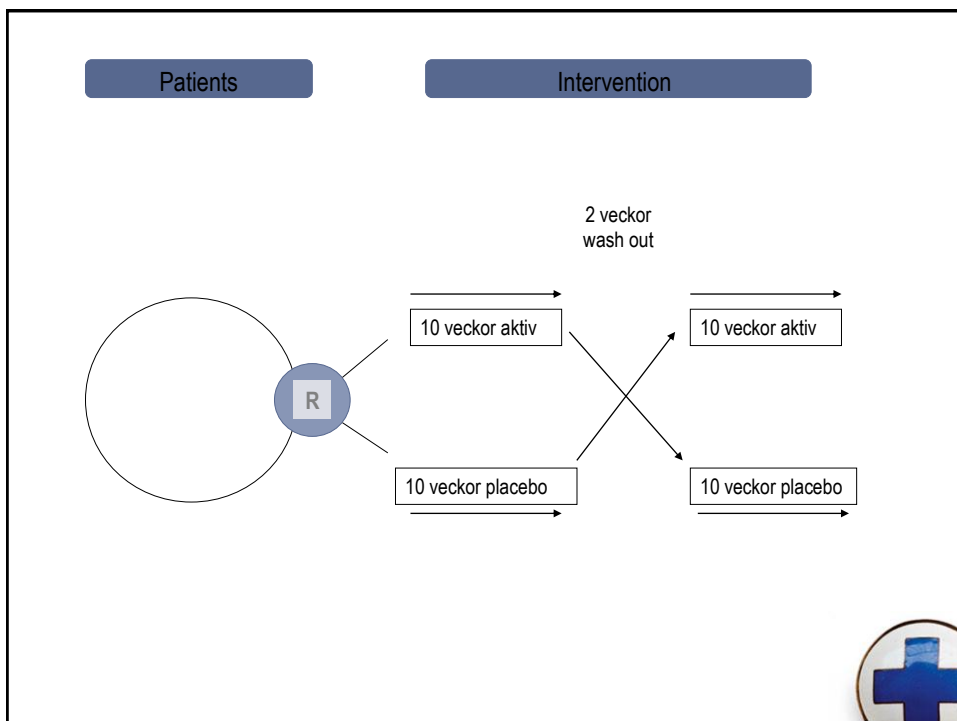
Astmatiker positiv effekt av TLA

Clinical effects of purified air administered to the breathing zone in allergic asthma: A double-blind randomized cross-over trial.

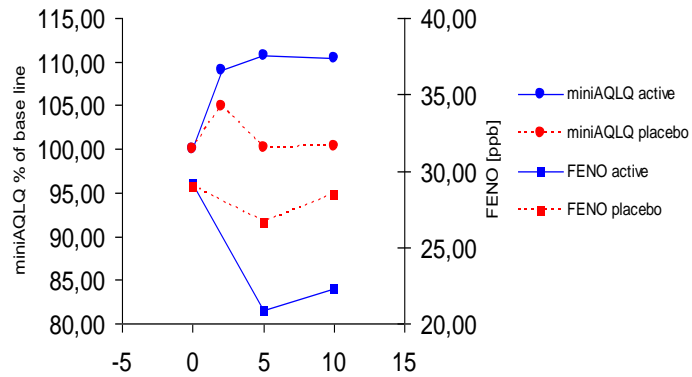
Pedroletti C et al, Respir Med. 2009

Nocturnal temperature controlled laminar airflow for treating atopic asthma: a randomised controlled trial. Boyle RJ et al

Thorax 2012



Förbättrad livskvalitet och minskad bronkiell inflammation

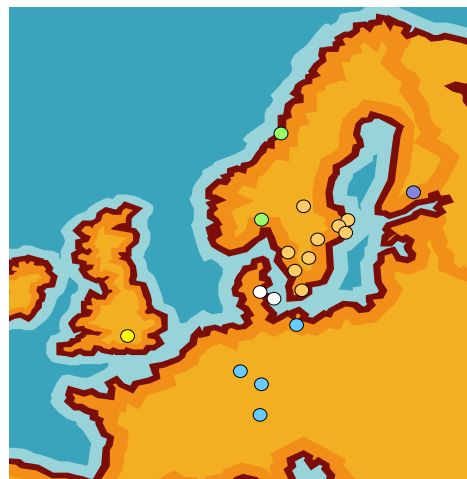


Pedroletti et al
Respir med 2009

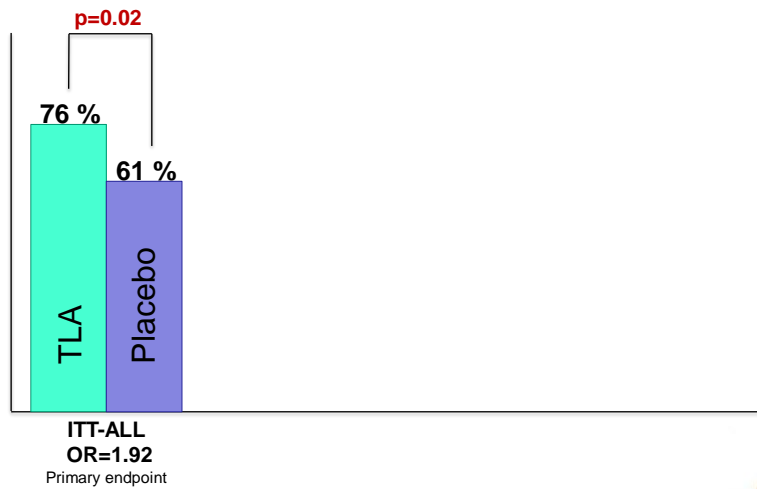


4A STUDY – EUROPEAN MULTICENTER STUDY

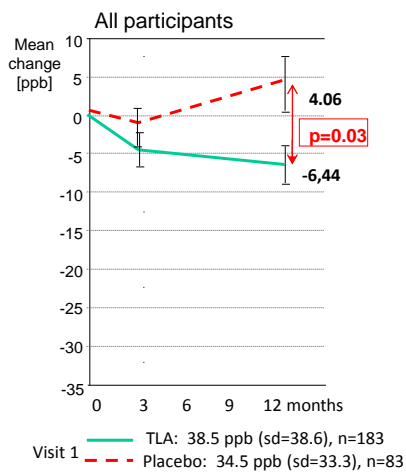
Imperial College, London
University Hospital, Lund
County Hospital, Jönköping
Sahlgrenska, Gothenburg
County Hospital, Ängelholm
St Göran Hospital, Stockholm
Karolinska Hospital, Stockholm
Södersjukhuset, Stockholm
Allergimottagningen, Karlstad
University Hospital, Linköping
Children's Hospital, Munich
University Hospital, Rostock
Ruhr-Universität, Bochum
Marien Hospital, Wesel
Bispebjerg Hospital, Copenhagen
University Hospital, Aarhus
Terveystalo Allergy Centre, Turku
St Olav's Hospital, Trondheim



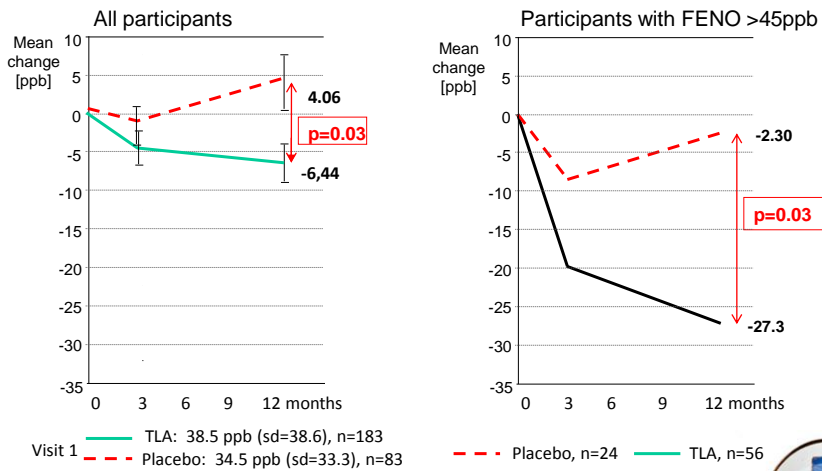
Primary endpoint: AQLQ responders (≥ 0.5) 1 year



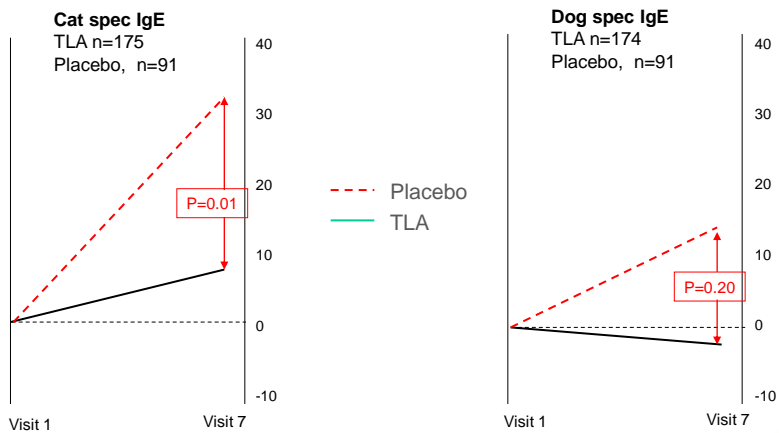
Secondary endpoint: Change in FENO, 1 year



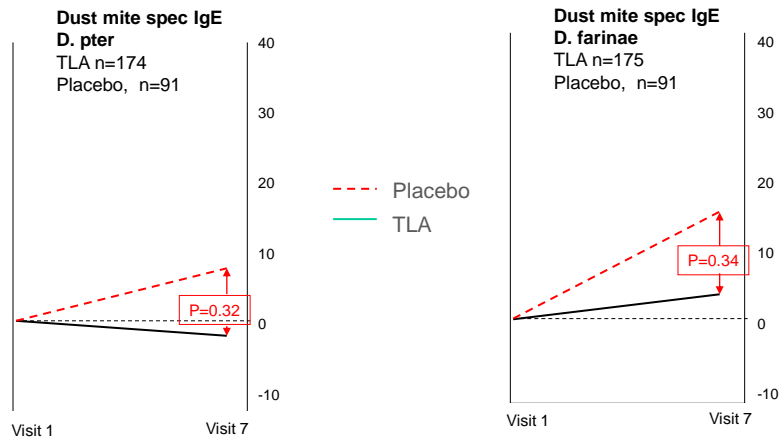
Sub group analysis: Change in FENO, 1 year



Secondary endpoint: Relative change in specific IgE, 1 year



Secondary endpoint: Relative change in specific IgE, 1 year

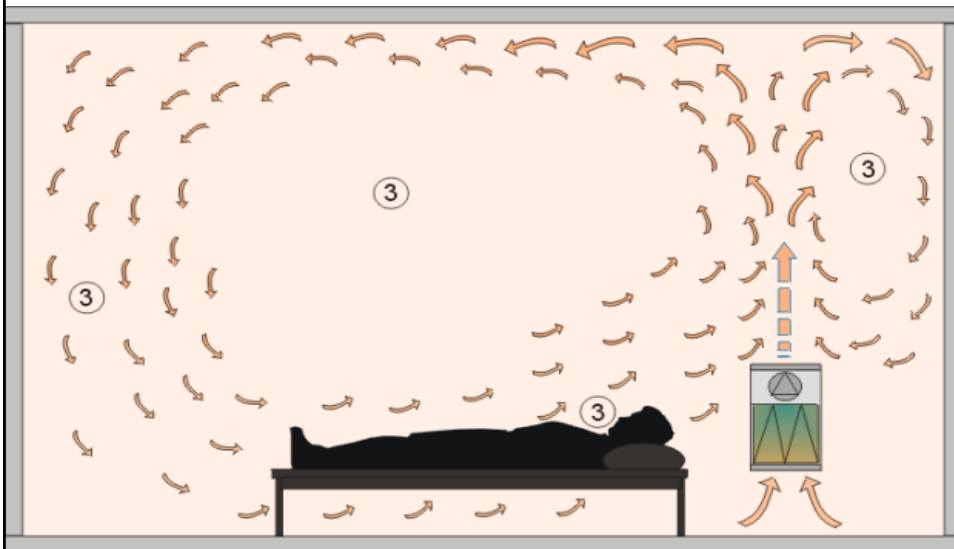


Replik 1

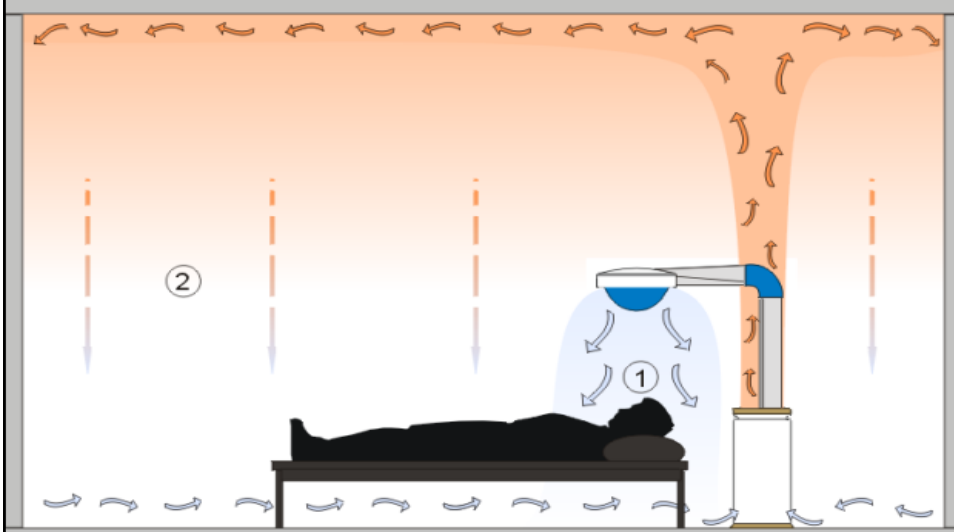
TLA är inte en konventionell luftrenare
Våra subanalyser stöder hypotesen

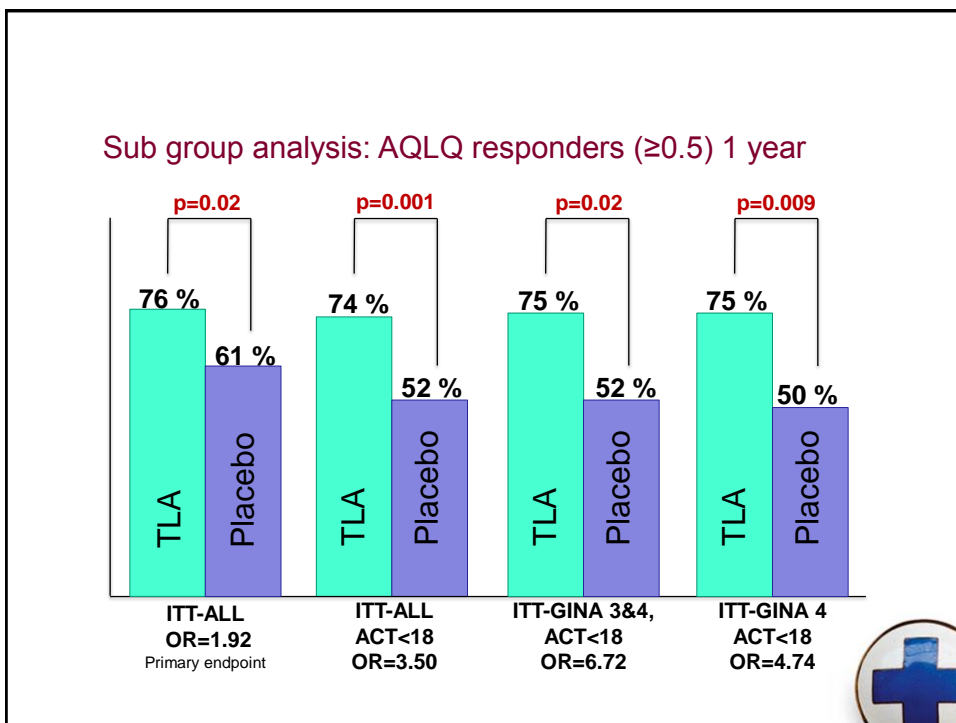
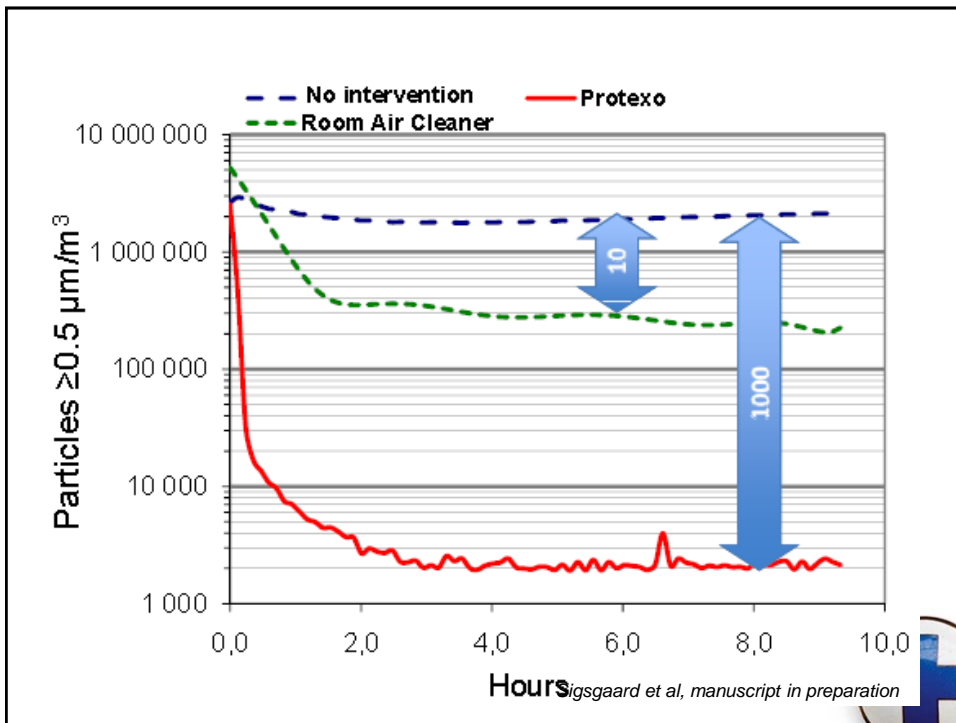
- Astmasvårighetsgrad
- Multiallergi
- Exacerbationer

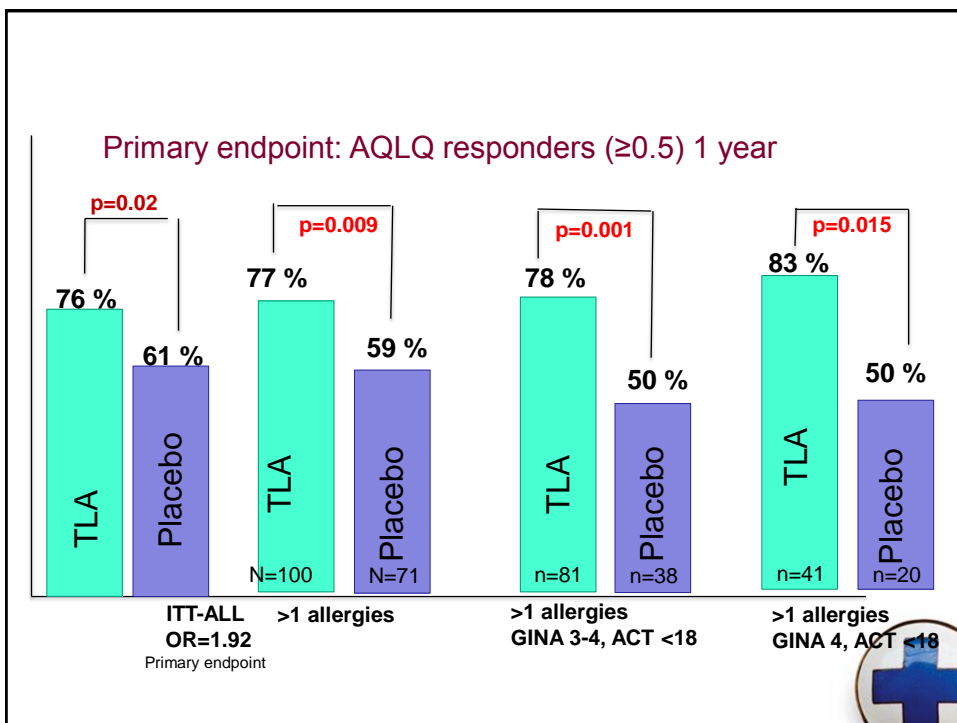
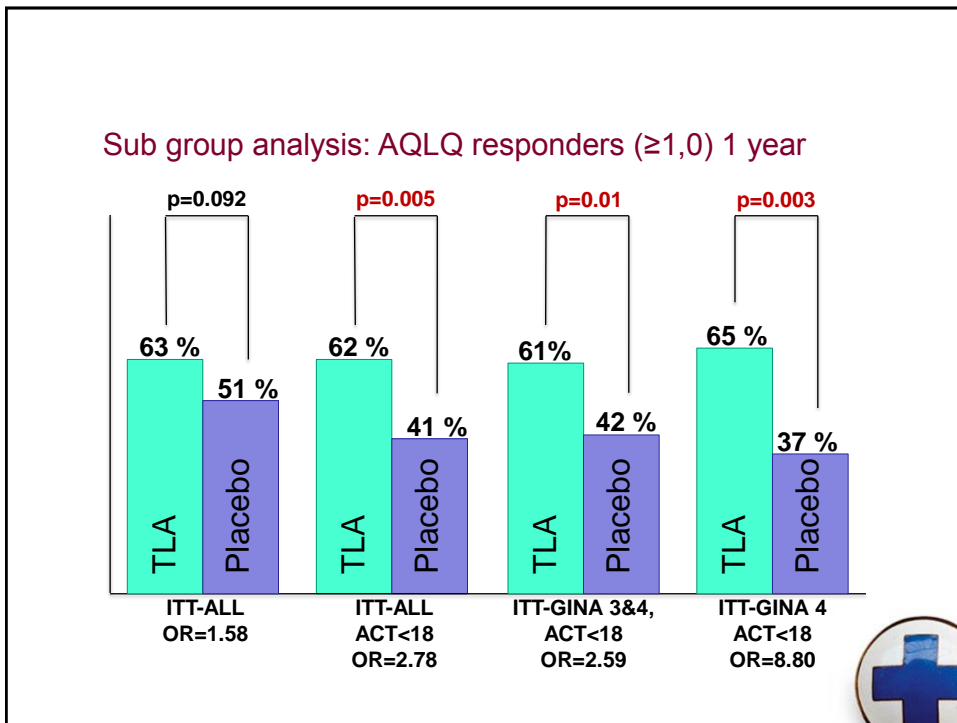
Konventionella luftrenare



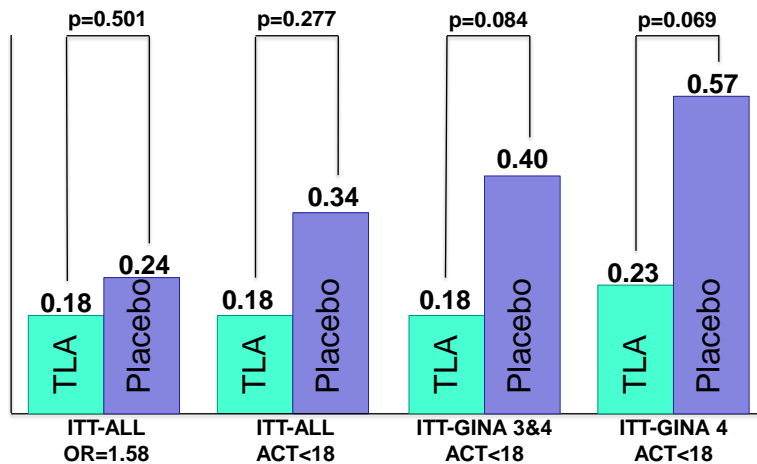
TLA







Sub group analysis: N:o of severe exacerbations



Severe Asthma Exacerbations (According to; Reddel HK, et al. An Official American Thoracic Society/European Respiratory Society Statement: Asthma Control and Exacerbations. Am J Respir Crit Care Med Vol 180. pp 59–99, 2009.)

Replik 2

Svårt allergiska astmasjuka patienter
behöver tillgång till behandlingen.

Endast skrivs ut av specialister på center

Vi behöver mer kunskap!

- Vem är den optimala patienten?
- Real-life data
- Nationellt vårdprogram
- Nationellt register